



Hentley Farm

March 2010

Today the Sales and Marketing Manager, Sarah of Hentley Farm, in the Seppeltfield area of the Barossa valley extended an invitation to us for a private familiarisation escorted from our house, Palmview; to the 90 hectare vine farm and its collection of very early German Settler buildings, c 1850. These together with some brilliant landscaping adjoin a gum laden dry (due to drought) meandering river course that is in essence the epitome of the Australian bush landscape.

With a tour of the main bluestone building (formerly a shearers quarters) we cited a cleverly restored minimalist interior with designer tasting, eating and meeting room, equipped with hand crafted locally made leather and stainless steel furniture with touches of Moroccan mirrors and lamps. The major ceiling was the original gum beam and pug and mortar at a height that would challenge our leading basketballers.

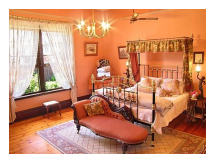
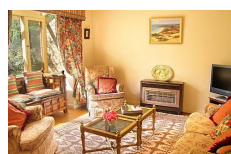
We enjoyed a beautiful 2009 Riesling before setting out in the cellar door manager, Drew's, Peugeot to view the vines at close quarters. At each different paddock we sampled the wine made from these very trestled vines in front of us.

Accompanied by informed facts from Drew and sipping our large goblets, the shade temperature of around 100 F had little effect on us. We even tasted one wine at different stages of preparation over the last 2 years. I was amazed how the syrupy, sweet immature wine of 2008 matured into a gracious Shiraz by 2010.

Back at the cellar door we were greeted by Sarah who had prepared a tasty and representative platter for lunch which we enjoyed while sipping a \$105 bottle of wine 'The Creation'.

You too can enjoy this unique experience when you stay with us. A \$75 per person private tour of the Vineyard with the manager can be easily arranged for you by our friendly staff.

www.hentleyfarm.com.au/



North Adelaide Heritage Group

Owned and Hosted by Rodney, Regina & William Twiss, North Adelaide, South Australia
Ph/Fax: +61 8 8272 1355 res@adelaideheritage.com

www.adelaideheritage.com

